



SAGE MAS 500

MICROSOFT PROJECT LINK

BUSINESS INSIGHTS

Sage MAS 500 takes inquiry, drill-down, monitoring, and data analysis to a whole new level with out-of-the-box business intelligence tools, including Business Insights Analyzer, Business Insights Explorer, Alerts, Crystal Reports®, Web Reports, and integration with desktop productivity tools.

PROJECT ACCOUNTING REPORTS

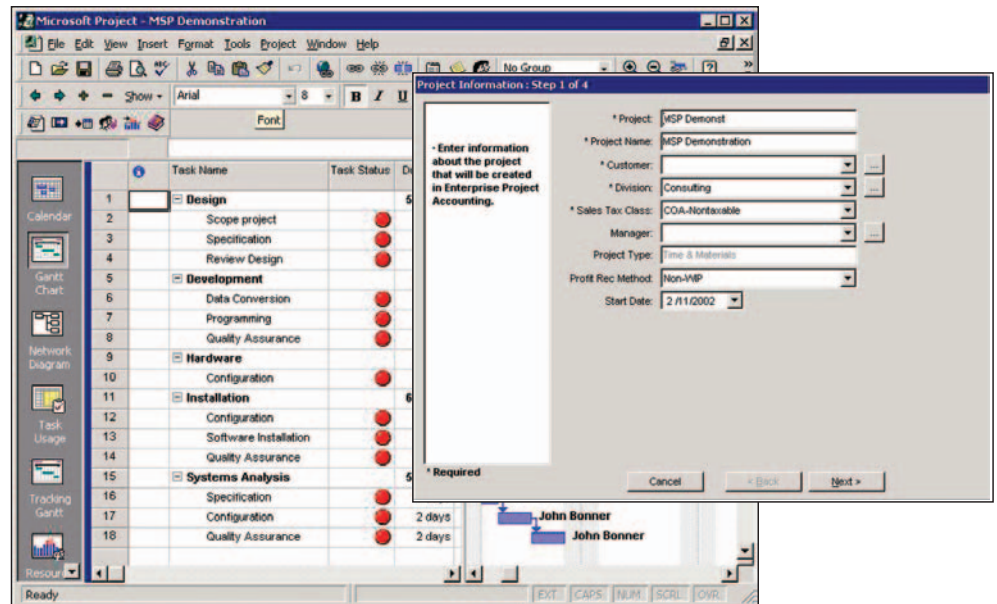
- Project Charge-ability
- Resource Utilization
- Project and Team Roster List
- Resource List
- Job Title List
- Timesheet and Expense Approval

MICROSOFT PROJECT REPORTS

- Project Summary
- Critical Tasks
- Milestones
- To-Do Lists
- Overallocated Resources
- Resource Usage

SAGE MAS 500 SOLUTIONS

- CRM and E-business
- Financials and Project Accounting
- Distribution and Manufacturing
- Human Resources and Payroll
- Customization and Integration
- Business Intelligence



Microsoft Project Link Facilitates a Streamlined, End-to-End Project Management Solution

In recent years, the software industry has seen the emergence of a variety of solutions designed to help companies better manage projects. Notably, the majority of these systems can be grouped into one of two categories—project accounting or project management. In the simplest terms, project management software aims to deliver projects on schedule. Project accounting solutions strive to deliver projects on budget.

Unfortunately, while many companies have successfully implemented project accounting or project management solutions, most have not been able to get the systems to work together. Instead, project managers and finance departments have resorted to communicating through e-mail, paper reports, and home-spun spreadsheets.

To solve these inefficiencies, Sage Software proudly offers the Sage MAS 500 ERP Microsoft Project Link module, enabling you to integrate Microsoft Project, a leading project management solution, with Sage MAS 500 ERP. Through the synthesis of these products, Microsoft Project Link is able to facilitate seamless information workflow. By passing data between these two systems, project managers are kept informed of changes or potential overruns, while the finance department simultaneously knows when to generate invoices. The module's versatility is underscored by its ability to update a diverse range of project costs and time with a single data entry.



Sage MAS 500

Microsoft Project Link

"Project Accounting provides up-to-date cost information that allows our managers to monitor the project's progress against its budget. This information is very valuable from a cost control perspective."

Mike Baldwin, Manager of Finance
Trican Well Service, Ltd.

Achieve Bi-directional Workflow Between Project Managers and Finance Managers

Exchanging information between the financial department and project managers is the key to keeping projects on track and on budget. Microsoft Project Link effectively enables a cross-pollination of the leading project management solution and the high-performance Sage MAS 500 project accounting solution. The results are staggering.

- Generate Microsoft project plans from built-in Project Accounting phases and tasks.
- Create project estimates from Microsoft Project through an easy-to-use wizard.
- Enable full visibility of project plan tasks and sub tasks from eTimesheets.
- Update actual hours worked in the project plan from hours entered in eTimesheets.
- Eliminate tedious, manual processes for project managers.
- Reduce administrative costs.

Optimize Project Profitability with Project Accounting from Sage MAS 500

Project Accounting provides you with the unique ability to control, track, analyze, and optimize a broad scope of projects. With the solution's advanced reporting and Web tools, project managers and supervisors can instantly obtain and view timely information and manage projects for maximum profitability and productivity.

- Track actual vs. estimated costs from forecast to completion.
- Use the intuitive Estimation Wizard to estimate multiple cost types.
- Transfer inventory and raw materials in and out of projects.
- Assign detailed employee contract rates at the project, title, or resource level.
- Leverage eTimesheets for remote time and expense entry, as well as project status inquiry and approvals.
- Choose from six GAAP-compliant profit recognition methods.
- Bill customers by date, percentage, contract, or project.

Contact us to obtain more detailed information about Project Accounting or eTimesheets.

Leverage Microsoft Project's Industry-Leading Tools

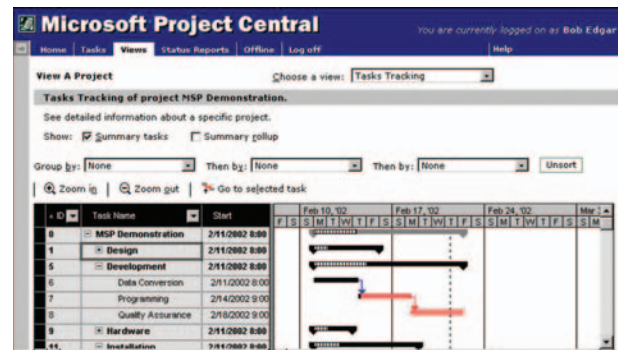
Microsoft Project is the world's most popular project planning tool. This robust solution provides your company's staff with the flexibility to collaboratively schedule, organize, track, and analyze projects. As such, it is the only project management solution you need to achieve the results your business demands.

- View tasks or resources in customizable groups to see rolled-up totals.
- Allow project managers to quickly create a diverse range of new tasks.
- Delegate tasks to other team members with a single click.
- Set up the system to display e-mail alerts when the project isn't going as planned.
- Leverage intelligent analysis tools for better decision making.
- Enable team members to see their own tasks presented graphically in a personal Gantt chart.

Enhance Project Collaboration with Microsoft Project Central

Sage Software has integrated Microsoft Project, so you can also link to Microsoft Project Central, a companion application designed to further enhance project collaboration and communication.

- Enable all stakeholders to interact with the project manager over the Internet or corporate intranet.
- Provide instant views of schedules and task data.
- Eliminate hierarchies and encourage more productive team structures.



2701 Commerce Way • Philadelphia, PA 19154 • 800-223-3282
2401 Whitehall Park Drive, Suite 300 • Charlotte, NC 28273 • 888-889-3282
www.computdata.com

